

PRODUCT RELEASE

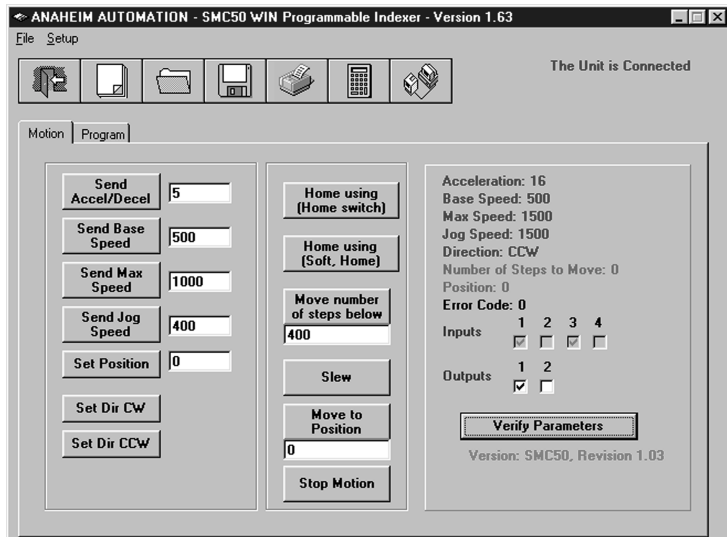
PCL501 Programmable Controller

- Cost Effective Programmable Controller
- RS485/RS232 Serial Communications
- Up to 32 Axis Can Be Networked
- Non-Volatile Stored Programming Memory
- Easy to Use Windows Software Included
- Capable of Real Time Motion
- Looping, Branching, Motion, I/O, and More
- Hard, Soft, and Home Limit Switch Inputs

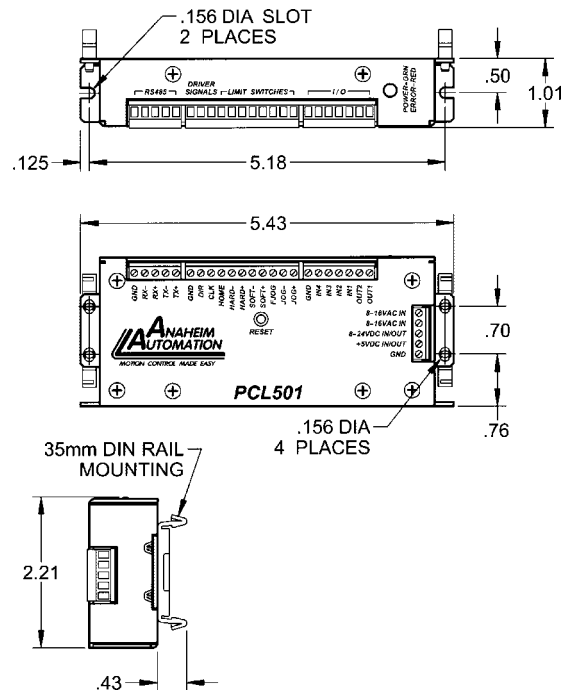


The PCL501 is an economical single axis step motor controller containing 2 Kbytes of non-volatile stored programming space. It provides flexible, independent control of step motors with clock and direction outputs from computers or machine controllers with a serial port. It is also capable of stand-alone operation making it an embedded machine controller. The easy to use Windows software, SMC50WIN, can be used to directly control motion and to program the controller. The PCL501 also has the ability for real time functions. A "Direct Mode" is used to directly control motion for real time movements through serial communication. The PCL501 has 20 commands which are easy-to-remember for direct movement of a step motor. The controller communicates via RS485 communication. Up to 32 units can be networked from one communications port on a PC or PLC. A RS232 version (the PCL501PC) is available for single unit communication. The PCL501 has 2 programmable open drain outputs and 4 TTL compatible inputs. It can be powered with DC (5-24VDC) or AC (8-16VAC) voltages. It's compact size and mounting provisions make it simple to install.

Easy to Use Windows Software:



Dimensions:



ANAHEIM AUTOMATION

910 East Orangefair Lane, Anaheim, CA 92801
e-mail: info@anaheimautomation.com

(714) 992-6990 fax: (714) 992-0471
website: www.anaheimautomation.com